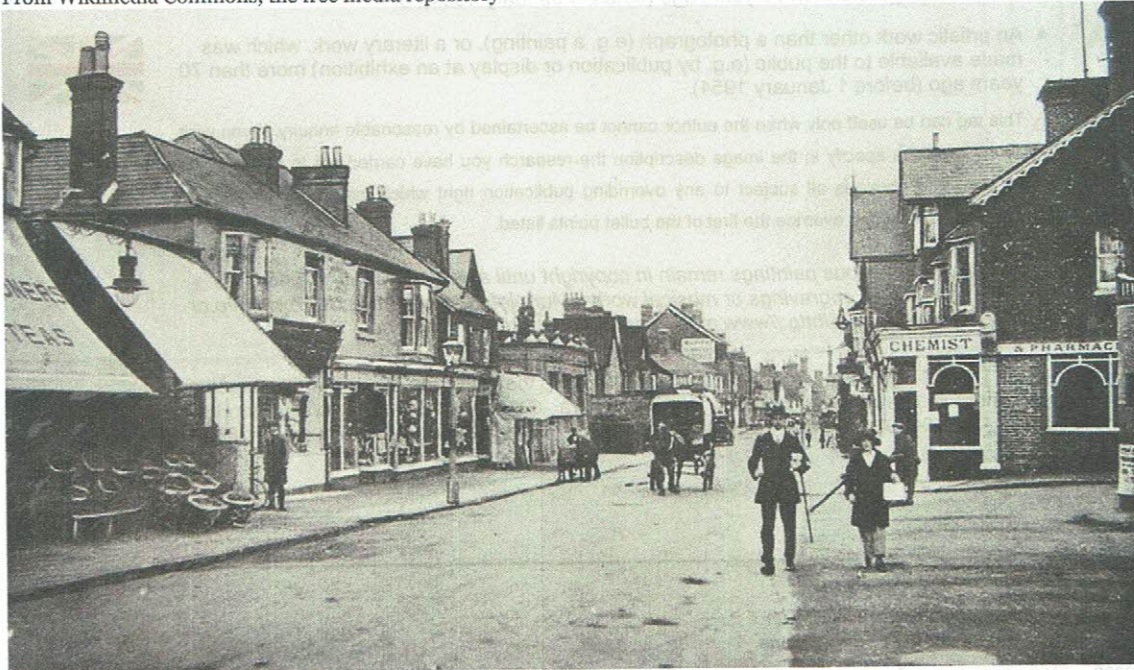


File:Crawley High Street, 1922.jpg

From Wikimedia Commons, the free media repository



Size of this preview: 800 × 468 pixels.

Original file (1,219 × 713 pixels, file size: 149 KB, MIME type: image/jpeg)

[Open in Media Viewer](#)

File information

Structured data

Captions	Edit
English	Add a one-line explanation of what this file represents

Description	English: High Street in Crawley, circa 1922, looking north up London Road. The original railway station is behind the camera to the right.
Date	1922
Source	Old postcard, pre-1939, originally cropped from here (https://www.flickr.com/photos/fulfilledgeorgie/3906749591/in/pool-1000746@N20)
Author	Unknown author

- Download**
all sizes
- Use this file**
on the web
- Use this file**
on a wiki
- Email a link**
to this file
- Information**
about reusing

File history

(This section contains text that is mirrored from the original page and is intentionally obscured for brevity.)

Permission
(Reusing this file)

This UK artistic or literary work, of which the author is **unknown** and cannot be ascertained by reasonable enquiry, is in the **public domain** because it is one of the following:

- A photograph, which has never previously been made available to the public (e.g. by publication or display at an exhibition) and which was taken more than 70 years ago (before 1 January 1954); or
- A photograph, which was made available to the public (e.g. by publication or display at an exhibition) more than 70 years ago (before 1 January 1954); or
- An artistic work other than a photograph (e.g. a painting), or a literary work, which was made available to the public (e.g. by publication or display at an exhibition) more than 70 years ago (before 1 January 1954).



⚠ This tag can be used only when the author cannot be ascertained by reasonable enquiry. If you wish to rely on it, please specify in the image description the research you have carried out to find who the author was. The above is all subject to any overriding publication right which may exist. In practice, publication right will often override the first of the bullet points listed.

Unpublished anonymous paintings remain in copyright until at least 1 January 2040. This tag does not apply to engravings or musical works. More information (<https://web.archive.org/web/20070710010006/http://www.museumscopyright.org.uk/private.pdf>)

Camera location 51° 06′ 46.17″ N, 0° 11′ 26.13″ W﻿ (https://geohack.toolforge.org/geohack.php?pagename=File:Crawley_High_Street,_1922.jpg¶ms=051.112825_N_-000.190592_E_globe:Earth_type:camera_region:GB_&language=en) View this and other nearby images on: OpenStreetMap (<https://wikimap.toolforge.org/?w&p=false&cluster=false&zoom=16&lat=051.112825&lon=-000.190592>)

File history

Click on a date/time to view the file as it appeared at that time.

	Date/Time	Thumbnail	Dimensions	User	Comment
current	22:11, 25 September 2009		1,219 × 713 (149 KB)	PeterSymonds (talk contribs)	{{Information Description={{en 1=High Street in Crawley, circa 1922, looking north up London Road. The original railway station is behind the camera to the right. }} Source=Old postcard, pre-1939,

You cannot overwrite this file.

File usage on Commons

The following page uses this file:

- [Crawley](#)

File usage on other wikis

The following other wikis use this file:

- Usage on [en.wikipedia.org](#)
 - [High Street](#)

Metadata

This file contains additional information such as Exif metadata which may have been added by the digital camera, scanner, or software program used to create or digitize it. If the file has been modified from its original state, some details such as the timestamp may not fully reflect those of the original file. The timestamp is only as accurate as the clock in the camera, and it may be completely wrong.

Image title	OLYMPUS DIGITAL CAMERA
Camera manufacturer	OLYMPUS CORPORATION
Camera model	C765UZ
Exposure time	1/125 sec (0.008)
F-number	f/4
ISO speed rating	64
Date and time of data generation	18:19, 10 September 2009
Lens focal length	6.3 mm